



# Choosing your SHIMPO Pottery Wheel

NIDEC-SHIMPO has a variety of Pottery Wheels that can suit all of your needs.

Which SHIMPO pottery model is right for me?

Direct Drive | Belt Driven | Stationary | Portable

## Questions to ask yourself...

How much space is in my studio?

How large will I be throwing?

Will I have a permanent designated space or will I need to move the wheel or wheels?

Will I want to alter thrown forms on my wheel after throwing?

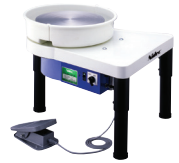
Will I want to use my wheel to throw standing?

Will I want to have a portable wheel for demonstrating or teaching purposes?

Will I need a wheel for handicap accessibility?

How much money do I want to spend?

**There are so many choices; we want you to make the right decision while investing!**



SHIMPO RK-3E



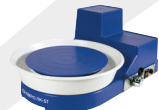
SHIMPO RK-3D



SHIMPO WHISPER-T



SHIMPO RK-55



SHIMPO RK-5T



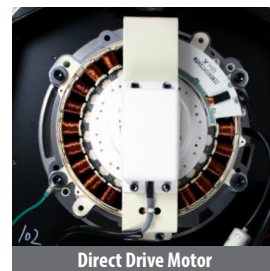
<b>Wheel Weight</b>	54 kg
<b>Wheel Dimensions</b>	587.375 mm x 698.5 mm x 857.25 mm
<b>Adjustable Leg Height</b>	457.2 mm - 533.4 mm (25.4 mm increments)
<b>Centering</b>	45 kg

## SHIMPO RK-3E

SHIMPO RK-3E pottery wheel uses an exceptional Direct Drive motor. The Direct Drive motor is a brushless, beltless motor that operates on a magnet system and is electronically controlled. As a result, the motor is **EXTREMELY** quiet!

### Features

- › Direct drive system; DC brushless motor
- › 355.6 mm wheel-head
- › Wheel-head Direction; clockwise/Counter-clockwise
- › Adjustable legs
- › Legs can be removed for storage or tabletop use
- › Virtually quiet; no belts, no vibration
- › Wheel-head acts as a banding wheel when the pedal is at stop
- › Pedal stops the wheel head immediately; no belt means no extra rotation when stopped
- › Higher torque; no belts
- › Maintains a specific set speed when stepping away to center, even with slow speeds with 45.3592 mm of clay



**Direct Drive Motor**

*Optional Accessory:*  
SHIMPO RK-3E extension legs to throw standing. The legs are made from heavy gauge, powder coated steel and designed with a curve for extreme stability. The legs will raise the SHIMPO RK-3E to a height of 889 mm to 939 mm in 25.4 mm increments.



**SHIMPO RK-3E  
Extension Legs**



## SHIMPO RK-3D

SHIMPO RK-3D pottery wheel includes all of the benefits of the Direct Drive Motor with a compact design.

### Features

- › Drive System; direct drive DC brushless motor
- › Wheel-head Direction; Clockwise/Counter-clockwise
- › 304 mm light alloy casting wheel-head, drilled for bat pins
- › Speed Control; fixed foot pedal with hand lever
- › Attached foot pedal with speed lever
- › Virtually quiet; no belts, no vibration
- › Wheel-head acts as a banding wheel when the pedal is at stop
- › Pedal stops the wheel-head immediately; no belt means no extra rotation when stopped
- › Higher torque; no belts
- › Maintains a specific set speed when stepping away to center, even with slow speeds with 100 lbs of clay

<b>Motor</b>	400W, single phase 230v, 50/60Hz
<b>Wheel-head</b>	304.8 wheel-head
<b>Wheel Dimensions</b>	525 x 582 x 51 mm
<b>Centering</b>	45 kg
<b>Wheel-head Speed</b>	0–250 rpm
<b>Wheel Weight</b>	52 kg

### Optional Accessory:

SHIMPO RK-3D manufactured after 1981 and all Master Series wheels when fitted with a 304 mm wheel-head. Both pieces of the splash pan remove quickly and easily for cleaning or when throwing larger ware. Shorter mounting bolts are required for use with our tables.



**Two-Piece Splash pan  
with ClipsFits**  
Measures 482.6 mm



## SHIMPO WHISPER-T

A direct drive motor, quiet 30 decibels and powerful 300W motor brings many features, including responsive, high torque at all speeds, powerful, smooth without any vibration (no belts or pulleys), and extremely quiet.

SHIMPO WHISPER-T's remote foot pedal is extremely smooth, responsive and is accurate during operation with adjustable height for comfort and ergonomics and removable multipurpose table-tops.



<b>Motor</b>	300W AC230V 50Hz/60Hz single phase
<b>Speed Control</b>	Remote foot pedal
<b>Wheel-head Speed</b>	0–250 rpm
<b>Wheel-head Direction</b>	Clockwise/Counter-clockwise
<b>Dimensions</b>	745 X 575 X 585mm (max)

## Features

- › High torque motor, powerful, smooth without any vibration and extremely quiet
- › Direct drive motor system (no belts or pulleys)
- › Wheel-head is quiet (30 decibels) and powerful (300W motor)
- › Remote foot pedal speed control
- › Adjustable height, comfort, and ergonomics with 5 height settings
- › Removable multipurpose table-tops

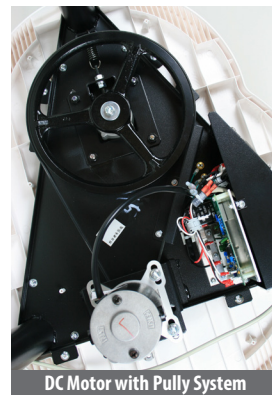


## SHIMPO RK-55

This DC motor driven wheel is **LIGHT** enough to carry for demos and push out of the way in the studio when not in use but sturdy enough and strong enough for your throwing needs.

### Features

- › 12 kg centering
- › 300 mm wheel-head
- › Broad Speed Range allows optimum speed under all load conditions
- › Built-in Breaker protects Motor from overload
- › Portable
- › Smooth and steady foot pedal control
- › Automatic belt tensioning system
- › Unique brushes in the motor make this wheel extremely quiet



<b>Reversibility</b>	Accommodates left and right hand users
<b>Wheel-head Speed</b>	0 – 250 rpm
<b>Wheel Dimensions</b>	560 W x 720 D x 540 H mm
<b>Centering</b>	12 kg
<b>Wheel Weight</b>	23 kg



<b>Wheel Weight</b>	12 kg
<b>Wheel Dimensions</b>	508 mm x 355.6 mm x 228.6 mm
<b>Centering</b>	365 W x 515 D x 230 H mm

## SHIMPO RK-5T / RK-5TF

SHIMPO RK-5T, a tabletop potter's wheel, is **LIGHT-WEIGHT**, handicap accessible, **COMPACT** and **PORTABLE**. The SHIMPO RK-5T is available in either a hand lever version or a foot pedal version.

### Features

- › DC motor
- › 10 kg centering
- › 0-250 rpm
- › 177 mm alloy wheel-head with bat pins
- › Portable
- › One piece easy twist off splash pan
- › Two bats included
- › Lever version is handicap accessible
- › Standard wheel-head direction is counter clockwise (can be ordered in cw)







Adjustable Legs  
(Nine adjustable  
slots, 25.4 mm  
increments)

## ADJUSTABLE STOOL

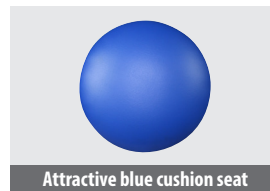
The **ADJUSTABLE** leg stool allows an assortment of heights to accommodate everyone and can be tilted to relieve strain on your lower back. The tilt feature also puts you over your work to help you while centering on the wheel. The **ADJUSTABLE** leg stool not only serves the potter but will also comfortably fill the needs of the painter and sculptor.

### Features

- › 483 – 660 mm (tilt seat feature)
- › Nine adjustable slots (25 mm increments)
- › Weight (4.53 kg)



482 mm - 660 mm (tilt seat feature)



Attractive blue cushion seat

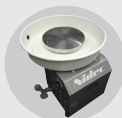
## SPLASHPANS



### 1-Piece Large Splashpan 584.2 mm

\*Fits most SHIMPO wheels

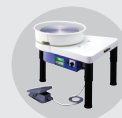
Shown on RK-3D



### 2-Piece Splashpan 482.6 mm (snap with flaps)

\*Fits all SHIMPO wheels except RK-5T

Shown on RK-3E



### 1-Piece Small Splashpan 482.6 mm

\*Fits most SHIMPO wheels

Shown on RK-3D



### 2-Piece Splashpan 482.6 mm (with tray & clips)

\*Fits all SHIMPO wheels except RK-5T

Shown on RK-3D

