



Choosing your Pugmill

土練機

NIDEC- SHIMPO has a variety of pugmills
that can suit all of your needs.

How do you choose which one is right for you?

Stainless Steel | Aluminum | Twin Auger
Single Auger | De-airing | Non De-airing

Here are some main pugmill features that can help you in your decision making.

Stainless Steel vs Aluminum:

- *Stainless steel is better long term, best for everyday porcelain users*
- *Aluminum is good for stoneware users*

Twin Auger vs Single Auger:

- *Twin augers increase wedging capability when pugging leather hard clay with softer clay (churning the clay together)*
- *Twin augers pull the clay through the chamber, alleviating the need to push the handle down to move clay through the hopper and into the barrel*
- *Single augers are meant to push clay through the barrel*

De-airing vs Non De-airing:

- *De-airing pugmills have a vacuum unit attached therefore removing 100% of the air in the clay*
- *Non de-airing pugmills can remove either some or most of the air in clay, depending on the size of the barrel versus the size of the nozzle where the extrusion occurs*

Pugmill vs Pugmill/Mixer:

- *Pugmills are for reclaiming clay when the clay is at a specific consistency*
- *Pugmill/mixers can mix wet, dry, and leather hard clay to reclaim clay into new clay*



NRA-04/04S



NVA-04S



PM-071



NVS-07



Motor	½ HP, 200W, 115 VAC, 60Hz single phase
Extruding Capacity	880 lbs per hour
Nozzle Diameter	3 ½" diameter
Hopper Size	3 ½" x 3 ½"
Dimensions	25 ½" x 12" x 22 ½"
Weight	NRA-04 - 144 lbs / NRA-04S - 166 lbs

NRA-04/04S

The **NRA-04/04S** pugmill features newly designed **TWIN AUGERS** and a forceful direct gear driven motor. It's high quality wedging and extruding capacity produces nearly air-free clay and increases clay workability that make this compact pugmill one of the most efficient and competitive on the market.

The **NRA-04/04S** is built with a standard safety limit switch, safety shut off switch (the hopper cannot be opened without shutting off the machine) and easy clean up with only six bolts to remove.

The **NRA-04S** pugmill includes a high quality stainless steel nozzle, auger case, and rollers.

Features

- Direct gear driven motor provides maximum mechanical force for blending, requiring minimum operator effort
- High extruding capacity; twin stainless steel mixing augers blend and extrude up to 880 lbs per hour
- Dual safety system; limit switch automatically cuts power to pugmill when augers are exposed. Stop button allows for immediate operator control
- Includes a clay cut-off wire and clay receiving table
- 5 year warranty



Easy Maintenance

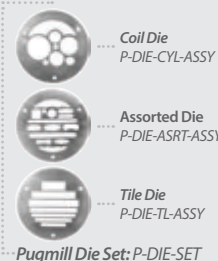


Easy Access to Mixing Chamber



Twin Stainless Still Augers

Stainless Steel Dies Available





NVA-04S

The **NVA-04S** is a *DE-AIRING* pugmill that features newly designed *TWIN AUGERS* and a forceful direct gear driven motor for remarkable extruding that produces air-free clay and increases clay workability. It features an all stainless-steel interior for use with porcelain and other light colored clay bodies. The high quality wedging and extruding capacity makes this compact pugmill one of the most efficient and competitive on the market.

Features

- › Direct gear driven motor provides maximum mechanical force for blending requiring minimum operator effort
- › Twin cast stainless steel mixing augers blend and extrude up to 440 lbs per hour
- › Dual safety system; limit switch automatically cuts power to pugmill when augers are exposed. Stop button allows for immediate operator control
- › Includes a clay cut-off wire, clay receiving table, and mounted on locking wheels
- › Air vacuum pump system (oil-free)
- › 5 year warranty

Motor	½ HP, 400W, 115 VAC, 60Hz single phase
Extruding Capacity	440 lbs per hour
Nozzle Diameter	3 ½ diameter
Dimensions	36" x 16 ½" x 29 ½"
Weight	320 lbs



Easy Access and Maintenance



Twin Augers

Stainless Steel Dies Available



Coil Die
P-DIE-CYL-ASSY

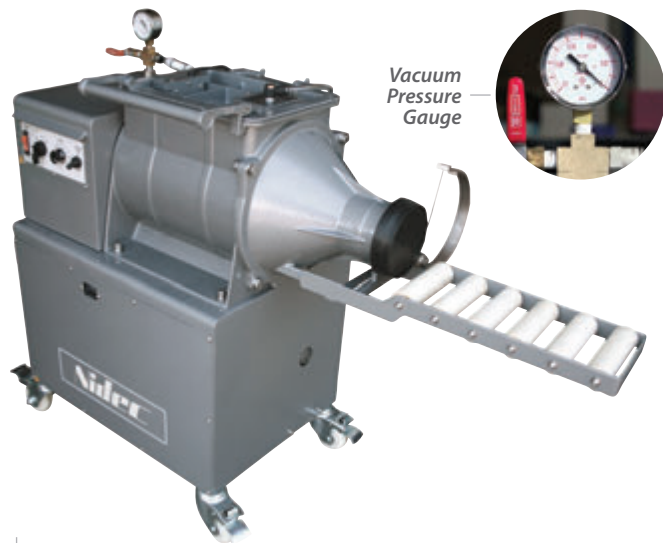


Assorted Die
P-DIE-ASRT-ASSY

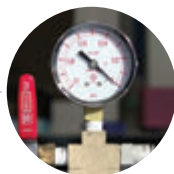


Tile Die
P-DIE-TL-ASSY

Pugmill Die Set: P-DIE-SET



Vacuum
Pressure
Gauge



NVS-07

The NVS-07 is a *DE-AIRING* pugmill mixer that features a powerful 1HP motor for mixing and extruding. It is all stainless steel, has a giant hopper and a 3 ½" size nozzle. A clay cutter, roller shelf, and locking castor wheels are included. The NVS-07 has easy access for cleaning and maintenance using a one bolt system for easy auger removal.

Features

- › All stainless steel
- › Dual safety system; limit switch and overload system
- › Includes clay cut-off wire and clay receiving table
- › Oil-free vacuum pump system
- › Large hopper and nozzle
- › Max batch capacity 45 lbs
- › 5 year warranty



Hopper



Twin Augers



Easy to Operate Control Panel

Stainless Steel Dies Available



Coil Die
P-DIE-CYL-ASSY



Assorted Die
P-DIE-ASRT-ASSY



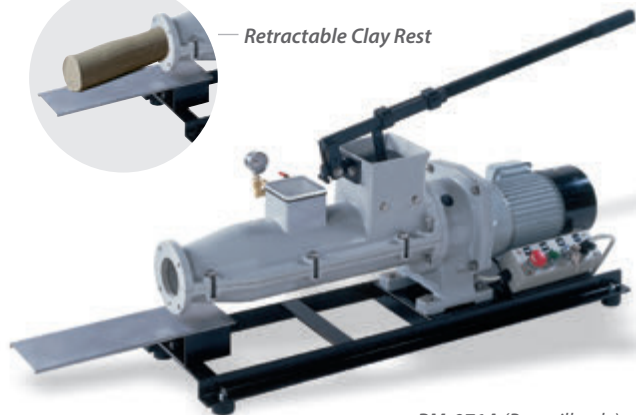
Tile Die
P-DIE-TL-ASSY

Pugmill Die Set: P-DIE-SET

Motor	1 HP, gear driven
Power Source	115 V / 60 Hz
Dual Safety System	Limit switch and overload system
Max Batch Capacity	45 lbs
Hopper Size	8 ½" x 11 ½"
Vacuum Pump System	Air vacuum pump system (oil-free), vacuums in same chamber as clay mixing
Nozzle diameter	3 ½" nozzle
Dimensions	35" x 17" x 33" (47" long with roller shelf extended)
Weight	310 lbs



— Retractable Clay Rest



PM-071A (Pugmill only)

PM-071V (Pugmill with vacuum)

PM-071-LS (Pugmill with limit switch)

PM-071V-LS (Pugmill with vacuum and limit switch)

Motor	1 HP, 750 W, 115 VAC, 60 Hz (220 VAC, 50/60 Hz available)
Capacity	800 lbs per hour
Nozzle Diameter	3" diameter
Hopper Size	4 3/4" x 4 3/4"
Dimensions	38" x 12" x 15"
Weight	PM-071 - 175 lbs / PM-071V - 195 lbs / PM-071V-LS - 200 lbs

PM-071A, PM-071V, PM-071-LS, PM-071V-LS

The **PM-071** pugmill's **FLEXIBLE** design is available with or without an attachable vacuum unit, and with or without a limit switch. This enables the school or professional to order what is needed now and upgrade later if necessary.

Features

- › Heavy-duty aluminum body; extremely durable design for both school and professional applications; die-cast body resists corrosion, preventing clay body contamination
- › Unique flexible design; order what is needed now, upgrade later
- › Special triple safety system; ignition key prevents unauthorized use; limit switch (optional) stops auger when exposed; prominent emergency stop button
- › Stainless steel auger; non-corrosive surface easily moves clay through barrel
- › Easy disassembly bolt system for easy removal of barrel top, allowing for thorough cleaning of interior
- › Optional vacuum attachment on models PM-071V & PM-071V-LS; Powerful 1/3 HP pump is compact and easy to attach; operates at the flip of a switch with minimal depreciation of 800 lbs per hour extruding capacity
- › Retractable clay rest
- › 1 year warranty



Vacuum Pump Option



Control Switch Operation Panel