



# Choosing your SHIMPO Pottery Wheel

NIDEC-SHIMPO has a variety of Pottery Wheels  
that can suit all of your needs.

Which SHIMPO pottery model is right for me?

Direct Drive | Belt Driven | Stationary | Portable

## Questions to ask yourself...

How much space is in my studio?

How large will I be throwing?

Will I have a permanent designated space or will I need to move the wheel or wheels?

Will I want to alter thrown forms on my wheel after throwing?

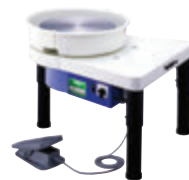
Will I want to use my wheel to throw standing?

Will I want to have a portable wheel for demonstrating or teaching purposes?

Will I need a wheel for handicap accessibility?

How much money do I want to spend?

**There are so many choices; we want you to make the right decision while investing!**



SHIMPO VL-WHISPER



SHIMPO RK-WHISPER



SHIMPO VL-LITE



SHIMPO ASPIRE



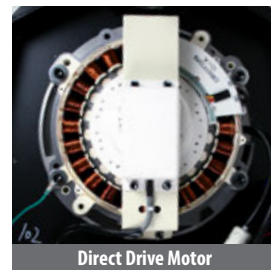
Wheel Weight	120 lbs
Wheel Dimensions	23 1/8" x 27 1/2" x 33 3/4"
Adjustable Leg Height	18" - 21" (1" increments)
Centering	100 lbs

## SHIMPO VL-WHISPER

SHIMPO VL-WHISPER pottery wheel uses an exceptional Direct Drive motor. The Direct Drive motor is a brushless, beltless motor that operates on a magnet system and is electronically controlled. As a result, the motor is *EXTREMELY* quiet!

### Features

- › 100 lbs centering
- › 14" wheel-head
- › 0 - 250 rpm
- › Adjustable legs
- › Legs can be removed for storage or tabletop use
- › Virtually quiet; no belts, no vibration
- › Wheel-head acts as a banding wheel when the pedal is at stop
- › Pedal stops the wheel head immediately; no belt means no extra rotation when stopped
- › Higher torque; no belts
- › Maintains a specific set speed when stepping away to center, even with slow speeds with 100lbs of clay
- › 5 year warranty



Direct Drive Motor

*Optional Accessory:*  
SHIMPO VL-WHISPER extension legs to throw standing. The legs are made from heavy gauge, powder coated steel and designed with a curve for extreme stability. The legs will raise the SHIMPO VL-WHISPER to a height of 35" to 37" in 1" increments.



SHIMPO VL-WHISPER  
Extension Legs  
(Part # EXT-LEG-SET-VLW)



## SHIMPO RK-WHISPER

SHIMPO RK-WHISPER pottery wheel includes all of the benefits of the Direct Drive Motor with a compact design.

### Features

- › 100 lbs centering
- › 12" wheel-head
- › 0-250 rpm
- › Attached foot pedal with speed lever
- › Virtually quiet; no belts, no vibration
- › Wheel-head acts as a banding wheel when the pedal is at stop
- › Pedal stops the wheel head immediately; no belt means no extra rotation when stopped
- › Higher torque; no belts
- › Maintains a specific set speed when stepping away to center, even with slow speeds with 100 lbs of clay
- › 5 year warranty

#### Wheel Weight

116 lbs

#### Wheel Dimensions

20" X 21" X 20"

#### Centering

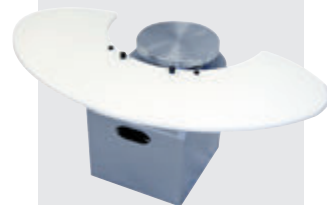
100 lbs

### Optional Accessory:

Work tables that mount on the front of the SHIMPO RK-WHISPER are made from solid HDPE plastic and give you extra space as you throw.



**Small Worktable**  
(Part # BPB00165P-HW)  
Measures 16" D x 21.5" W



**Large Worktable**  
(Part # BPB00160P-HW)  
Measures 16" D x 44" W



**Wheel Weight**

51 lbs

**Wheel Dimensions**

22" x 28" x 21"

**Centering**

25 lbs

## SHIMPO VL-LITE

This DC motor driven wheel is **LIGHT** enough to carry for demos and push out of the way in the studio when not in use but sturdy enough and strong enough for your throwing needs.

### Features

- › 25 lbs centering
- › 12" wheel-head
- › 0-250 rpm
- › Portable
- › Smooth and steady foot pedal control
- › Automatic belt tensioning system
- › Unique brushes in the motor make this wheel extremely quiet
- › 5 year warranty



*Free Gift: Every SHIMPO VL-LITE pottery wheel comes with a free DVD*



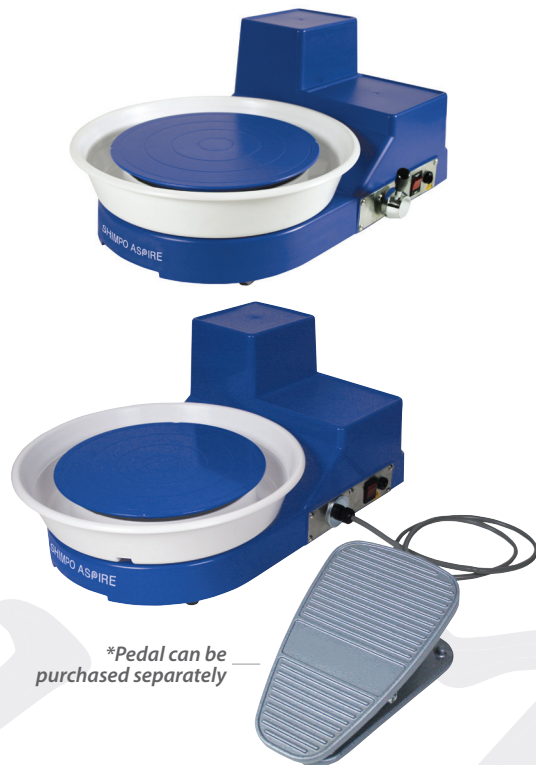
*Throwing on the Potter's Wheel  
Featuring The Clay Lady*

## SHIMPO ASPIRE

SHIMPO ASPIRE, a tabletop potter's wheel, is *LIGHTWEIGHT*, handicap accessible, *COMPACT* and *PORTABLE*. The SHIMPO ASPIRE is available in either a hand lever version or a foot pedal version.

### Features

- › 20 lbs centering
- › 0-250 rpm
- › Portable
- › One piece easy twist off splashpan
- › Two bats included
- › Lever version is handicap accessible
- › DC motor
- › Standard wheel-head direction is counter clockwise (can be ordered in cw)
- › 5 year warranty



\*Pedal can be purchased separately

Wheel Weight	30 lbs
Wheel Dimensions	20" x 14 1/2" x 9"
Centering	20 lbs



Includes Two Bats

*Free Gift: Every SHIMPO ASPIRE tabletop pottery wheel comes with a free DVD*



*Throwing on the Potter's Wheel  
Featuring The Clay Lady*



*Adjustable Legs  
(Nine adjustable  
slots, 1" increments)*



## ADJUSTABLE STOOL

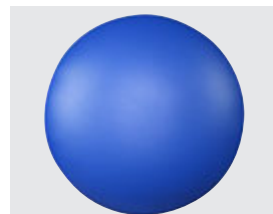
The **ADJUSTABLE** leg stool allows an assortment of heights to accommodate everyone and can be tilted to relieve strain on your lower back. The tilt feature also puts you over your work to help you while centering on the wheel. The **ADJUSTABLE** leg stool not only serves the potter but will also comfortably fill the needs of the painter and sculptor.

### Features

- › Adjustable leg heights 19"– 26"
- › Nine adjustable heights (1" increments)
- › Weight (10 lbs)
- › 2 year warranty



**19" - 26" (tilt seat feature)**



**Attractive blue cushion seat**



**7 1/2" Plate Form  
(Part # WHM7PL)**



**9" Plate Form  
(Part# WHM9PL)**



**7 1/2" Bowl Form  
(Part # WHM7BL)**



**Bat Adapter for molds  
(Part # WHM-AD-BAT)**

## HUMP MOLD THROWING SYSTEM

NIDEC-SHIMPO's HUMP MOLD THROWING SYSTEM allows potters instant throwing gratification! No need to know how to center and pull up the clay on the wheel. Just roll out a slab, drape it over the mold; put the mold on the wheel and form the shape you have a plate or bowl!



## SPLASHPANS

We have made wheels to suit potters' needs since 1952!

RK-1, RK-3B, RK-3, RK-8, BANTAM, RK-2, RK-2C, RK-10, RK-1X, MASTER SERIES (M-1, M-250, M-400, M-750), VELOCITY (V35, V75), SHIMPO VL-WHISPER, SHIMPO RK-WHISPER, SHIMPO VL-LITE, SHIMPO ASPIRE TABLETOP.



### 1-Piece Large Splashpan 23"

Part# SW-RKP-027L

\*Fits most SHIMPO wheels including RK-2's

Shown on  
RK-WHISPER



### 2-Piece Splashpan 19" (snap with flaps)

Part# AC-001-2VL-A

\*Fits all SHIMPO wheels except RK-2's, Bantam & Aspire

Shown on  
VL-WHISPER



### 1-Piece Small Splashpan 19"

Part# SW-RKP-027

\*Fits most SHIMPO wheels including RK-2's

Shown on  
RK-WHISPER



### 2-Piece Splashpan 19" (with tray & clips)

Part# KRKC025011

\*Fits all SHIMPO wheels except RK-2's, Bantam & Aspire

Shown on  
RK-WHISPER

