



NIDEC-SHIMPO CERAMICS

We keep you turning

Nidec



NIDEC-SHIMPO has established and continues a **TRADITION OF EXCELLENCE** in manufacturing ceramic equipment for potters worldwide for more than a half century.

We are known for our cutting edge technology, excellent customer service and great care to the pottery community and involvement in education in the ceramic arts.

With our full involvement in the pottery community, we strive to give production potters, hobbyists, and educators the equipment they need to make their ceramic endeavors a success.

Contents

■ Pottery Wheels	2-7
■ Pottery Wheel Accessories	8-9
■ Pugmills.....	10-15
■ Slab Rollers	16-19
■ Ball Mills & Jigger Arms.....	20-21
■ Banding Wheels	22-23
■ Hand Extruder	24-25
■ Pottery Tools	26-27

NIDEC-SHIMPO Information

NIDEC-SHIMPO Online.....	28
NIDEC-SHIMPO and the Community	29

A close-up, artistic photograph of a person's hands shaping a piece of pottery on a pottery wheel. The hands are positioned to guide the clay as it rotates. The background is a soft, out-of-focus blue, and the overall image has a monochromatic blue tint.

Choosing your SHIMPO Pottery Wheel

NIDEC-SHIMPO has a variety of Pottery Wheels
that can suit all of your needs.

Which SHIMPO pottery model is right for me?

Direct Drive | Belt Driven | Stationary | Portable

Questions to ask yourself...

How much space is in my studio?

How large will I be throwing?

Will I have a permanent designated space or will I need to move the wheel or wheels?

Will I want to alter thrown forms on my wheel after throwing?

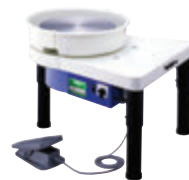
Will I want to use my wheel to throw standing?

Will I want to have a portable wheel for demonstrating or teaching purposes?

Will I need a wheel for handicap accessibility?

How much money do I want to spend?

There are so many choices; we want you to make the right decision while investing!



SHIMPO VL-WHISPER



SHIMPO RK-WHISPER



SHIMPO VL-LITE



SHIMPO ASPIRE



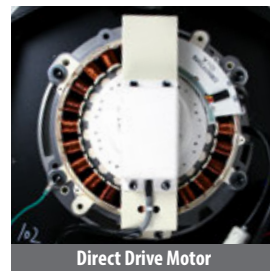
Wheel Weight	120 lbs
Wheel Dimensions	23 1/8" x 27 1/2" x 33 3/4"
Adjustable Leg Height	18" - 21" (1" increments)
Centering	100 lbs

SHIMPO VL-WHISPER

SHIMPO VL-WHISPER pottery wheel uses an exceptional Direct Drive motor. The Direct Drive motor is a brushless, beltless motor that operates on a magnet system and is electronically controlled. As a result, the motor is *EXTREMELY* quiet!

Features

- › 100 lbs centering
- › 14" wheel-head
- › 0 - 250 rpm
- › Adjustable legs
- › Legs can be removed for storage or tabletop use
- › Virtually quiet; no belts, no vibration
- › Wheel-head acts as a banding wheel when the pedal is at stop
- › Pedal stops the wheel head immediately; no belt means no extra rotation when stopped
- › Higher torque; no belts
- › Maintains a specific set speed when stepping away to center, even with slow speeds with 100lbs of clay
- › 5 year warranty



Direct Drive Motor

Optional Accessory:
SHIMPO VL-WHISPER extension legs to throw standing. The legs are made from heavy gauge, powder coated steel and designed with a curve for extreme stability. The legs will raise the SHIMPO VL-WHISPER to a height of 35" to 37" in 1" increments.



SHIMPO VL-WHISPER
Extension Legs
(Part # EXT-LEG-SET-VLW)



SHIMPO RK-WHISPER

SHIMPO RK-WHISPER pottery wheel includes all of the benefits of the Direct Drive Motor with a compact design.

Features

- › 100 lbs centering
- › 12" wheel-head
- › 0-250 rpm
- › Attached foot pedal with speed lever
- › Virtually quiet; no belts, no vibration
- › Wheel-head acts as a banding wheel when the pedal is at stop
- › Pedal stops the wheel head immediately; no belt means no extra rotation when stopped
- › Higher torque; no belts
- › Maintains a specific set speed when stepping away to center, even with slow speeds with 100 lbs of clay
- › 5 year warranty

Wheel Weight

116 lbs

Wheel Dimensions

20" X 21" X 20"

Centering

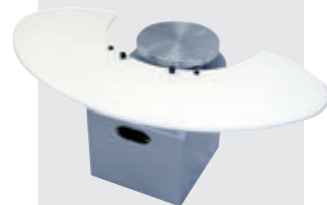
100 lbs

Optional Accessory:

Work tables that mount on the front of the SHIMPO RK-WHISPER are made from solid HDPE plastic and give you extra space as you throw.



Small Worktable
(Part # BPB00165P-HW)
Measures 16" D x 21.5" W



Large Worktable
(Part # BPB00160P-HW)
Measures 16" D x 44" W



Wheel Weight

51 lbs

Wheel Dimensions

22" x 28" x 21"

Centering

25 lbs

SHIMPO VL-LITE

This DC motor driven wheel is ***LIGHT*** enough to carry for demos and push out of the way in the studio when not in use but sturdy enough and strong enough for your throwing needs.

Features

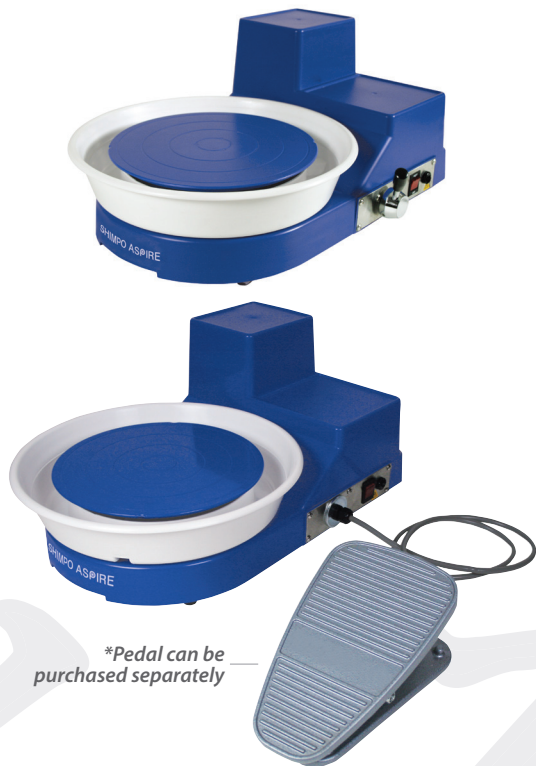
- › 25 lbs centering
- › 12" wheel-head
- › 0-250 rpm
- › Portable
- › Smooth and steady foot pedal control
- › Automatic belt tensioning system
- › Unique brushes in the motor make this wheel extremely quiet
- › 5 year warranty



Free Gift: Every SHIMPO VL-LITE pottery wheel comes with a free DVD



*Throwing on the Potter's Wheel
Featuring The Clay Lady*



*Pedal can be purchased separately

Wheel Weight	30 lbs
Wheel Dimensions	20" x 14 1/2" x 9"
Centering	20 lbs

SHIMPO ASPIRE

SHIMPO ASPIRE, a tabletop potter's wheel, is **LIGHTWEIGHT**, handicap accessible, **COMPACT** and **PORTABLE**. The SHIMPO ASPIRE is available in either a hand lever version or a foot pedal version.

Features

- › 20 lbs centering
- › 0-250 rpm
- › Portable
- › One piece easy twist off splashpan
- › Two bats included
- › Lever version is handicap accessible
- › DC motor
- › Standard wheel-head direction is counter clockwise (can be ordered in cw)
- › 5 year warranty



Includes Two Bats

Free Gift: Every SHIMPO ASPIRE tabletop pottery wheel comes with a free DVD



*Throwing on the Potter's Wheel
Featuring The Clay Lady*



*Adjustable Legs
(Nine adjustable
slots, 1" increments)*



ADJUSTABLE STOOL

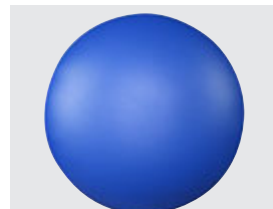
The **ADJUSTABLE** leg stool allows an assortment of heights to accommodate everyone and can be tilted to relieve strain on your lower back. The tilt feature also puts you over your work to help you while centering on the wheel. The **ADJUSTABLE** leg stool not only serves the potter but will also comfortably fill the needs of the painter and sculptor.

Features

- › Adjustable leg heights 19"– 26"
- › Nine adjustable heights (1" increments)
- › Weight (10 lbs)
- › 2 year warranty



19" - 26" (tilt seat feature)



Attractive blue cushion seat



**7 1/2" Plate Form
(Part # WHM7PL)**



**9" Plate Form
(Part# WHM9PL)**



**7 1/2" Bowl Form
(Part # WHM7BL)**



**Bat Adapter for molds
(Part # WHM-AD-BAT)**

HUMP MOLD THROWING SYSTEM

NIDEC-SHIMPO's HUMP MOLD THROWING SYSTEM allows potters instant throwing gratification! No need to know how to center and pull up the clay on the wheel. Just roll out a slab, drape it over the mold; put the mold on the wheel and form the shape you have a plate or bowl!



SPLASHPANS

We have made wheels to suit potters' needs since 1952!

RK-1, RK-3B, RK-3, RK-8, BANTAM, RK-2, RK-2C, RK-10, RK-1X, MASTER SERIES (M-1, M-250, M-400, M-750), VELOCITY (V35, V75), SHIMPO VL-WHISPER, SHIMPO RK-WHISPER, SHIMPO VL-LITE, SHIMPO ASPIRE TABLETOP.



1-Piece Large Splashpan 23"

Part# SW-RKP-027L

*Fits most SHIMPO wheels including RK-2's

Shown on
RK-WHISPER



2-Piece Splashpan 19" (snap with flaps)

Part# AC-001-2VL-A

*Fits all SHIMPO wheels except RK-2's, Bantam & Aspire

Shown on
VL-WHISPER



1-Piece Small Splashpan 19"

Part# SW-RKP-027

*Fits most SHIMPO wheels including RK-2's

Shown on
RK-WHISPER



2-Piece Splashpan 19" (with tray & clips)

Part# KRKC025011

*Fits all SHIMPO wheels except RK-2's, Bantam & Aspire

Shown on
RK-WHISPER





Choosing your Pugmill

土練機

NIDEC- SHIMPO has a variety of pugmills
that can suit all of your needs.

How do you choose which one is right for you?

Stainless Steel | Aluminum | Twin Auger
Single Auger | De-airing | Non De-airing

Here are some main pugmill features that can help you in your decision making.

Stainless Steel vs Aluminum:

- *Stainless steel is better long term, best for everyday porcelain users*
- *Aluminum is good for stoneware users*

Twin Auger vs Single Auger:

- *Twin augers increase wedging capability when pugging leather hard clay with softer clay (churning the clay together)*
- *Twin augers pull the clay through the chamber, alleviating the need to push the handle down to move clay through the hopper and into the barrel*
- *Single augers are meant to push clay through the barrel*

De-airing vs Non De-airing:

- *De-airing pugmills have a vacuum unit attached therefore removing 100% of the air in the clay*
- *Non de-airing pugmills can remove either some or most of the air in clay, depending on the size of the barrel versus the size of the nozzle where the extrusion occurs*

Pugmill vs Pugmill/Mixer:

- *Pugmills are for reclaiming clay when the clay is at a specific consistency*
- *Pugmill/mixers can mix wet, dry, and leather hard clay to reclaim clay into new clay*



NRA-04/04S



NVA-04S



PM-071



NVS-07



Motor	½ HP, 200W, 115 VAC, 60Hz single phase
Extruding Capacity	880 lbs per hour
Nozzle Diameter	3 ½" diameter
Hopper Size	3 ½" x 3 ½"
Dimensions	25 ½" x 12" x 22 ½"
Weight	NRA-04 - 144 lbs / NRA-04S - 166 lbs

NRA-04/04S

The **NRA-04/04S** pugmill features newly designed **TWIN AUGERS** and a forceful direct gear driven motor. It's high quality wedging and extruding capacity produces nearly air-free clay and increases clay workability that make this compact pugmill one of the most efficient and competitive on the market.

The **NRA-04/04S** is built with a standard safety limit switch, safety shut off switch (the hopper cannot be opened without shutting off the machine) and easy clean up with only six bolts to remove.

The **NRA-04S** pugmill includes a high quality stainless steel nozzle, auger case, and rollers.

Features

- Direct gear driven motor provides maximum mechanical force for blending, requiring minimum operator effort
- High extruding capacity; twin stainless steel mixing augers blend and extrude up to 880 lbs per hour
- Dual safety system; limit switch automatically cuts power to pugmill when augers are exposed. Stop button allows for immediate operator control
- Includes a clay cut-off wire and clay receiving table
- 5 year warranty



Stainless Steel Dies Available





NVA-04S

The **NVA-04S** is a *DE-AIRING* pugmill that features newly designed *TWIN AUGERS* and a forceful direct gear driven motor for remarkable extruding that produces air-free clay and increases clay workability. It features an all stainless-steel interior for use with porcelain and other light colored clay bodies. The high quality wedging and extruding capacity makes this compact pugmill one of the most efficient and competitive on the market.

Features

- › Direct gear driven motor provides maximum mechanical force for blending requiring minimum operator effort
- › Twin cast stainless steel mixing augers blend and extrude up to 440 lbs per hour
- › Dual safety system; limit switch automatically cuts power to pugmill when augers are exposed. Stop button allows for immediate operator control
- › Includes a clay cut-off wire, clay receiving table, and mounted on locking wheels
- › Air vacuum pump system (oil-free)
- › 5 year warranty

Motor	½ HP, 400W, 115 VAC, 60Hz single phase
Extruding Capacity	440 lbs per hour
Nozzle Diameter	3 ½ diameter
Dimensions	36" x 16 ½" x 29 ½"
Weight	320 lbs



Easy Access and Maintenance



Twin Augers

Stainless Steel Dies Available



Coil Die
P-DIE-CYL-ASSY

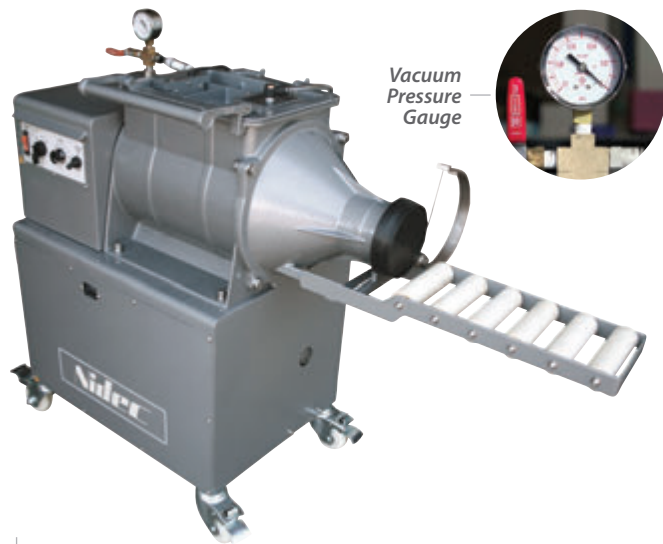


Assorted Die
P-DIE-ASRT-ASSY

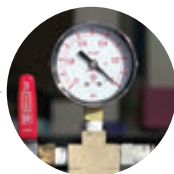


Tile Die
P-DIE-TL-ASSY

Pugmill Die Set: P-DIE-SET



Vacuum
Pressure
Gauge



NVS-07

The NVS-07 is a *DE-AIRING* pugmill mixer that features a powerful 1HP motor for mixing and extruding. It is all stainless steel, has a giant hopper and a 3 ½" size nozzle. A clay cutter, roller shelf, and locking castor wheels are included. The NVS-07 has easy access for cleaning and maintenance using a one bolt system for easy auger removal.

Features

- › All stainless steel
- › Dual safety system; limit switch and overload system
- › Includes clay cut-off wire and clay receiving table
- › Oil-free vacuum pump system
- › Large hopper and nozzle
- › Max batch capacity 45 lbs
- › 5 year warranty



Hopper



Twin Augers



Easy to Operate Control Panel

Stainless Steel Dies Available



Coil Die
P-DIE-CYL-ASSY



Assorted Die
P-DIE-ASRT-ASSY



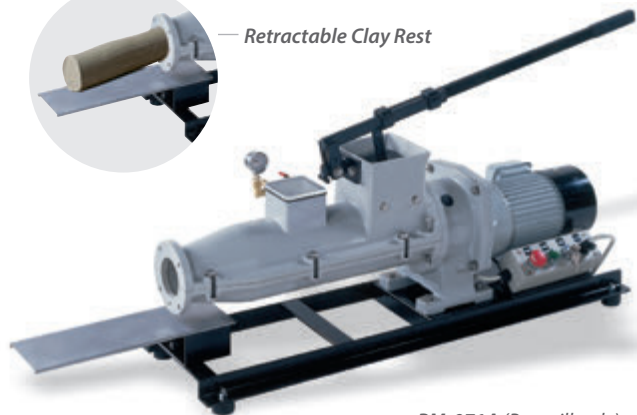
Tile Die
P-DIE-TL-ASSY

Pugmill Die Set: P-DIE-SET

Motor	1 HP, gear driven
Power Source	115 V / 60 Hz
Dual Safety System	Limit switch and overload system
Max Batch Capacity	45 lbs
Hopper Size	8 ½" x 11 ½"
Vacuum Pump System	Air vacuum pump system (oil-free), vacuums in same chamber as clay mixing
Nozzle diameter	3 ½" nozzle
Dimensions	35" x 17" x 33" (47" long with roller shelf extended)
Weight	310 lbs



— Retractable Clay Rest



PM-071A (Pugmill only)

PM-071V (Pugmill with vacuum)

PM-071-LS (Pugmill with limit switch)

PM-071V-LS (Pugmill with vacuum and limit switch)

Motor	1 HP, 750 W, 115 VAC, 60 Hz (220 VAC, 50/60 Hz available)
Capacity	800 lbs per hour
Nozzle Diameter	3" diameter
Hopper Size	4 3/4" x 4 3/4"
Dimensions	38" x 12" x 15"
Weight	PM-071 - 175 lbs / PM-071V - 195 lbs / PM-071V-LS - 200 lbs

PM-071A, PM-071V, PM-071-LS, PM-071V-LS

The **PM-071** pugmill's **FLEXIBLE** design is available with or without an attachable vacuum unit, and with or without a limit switch. This enables the school or professional to order what is needed now and upgrade later if necessary.

Features

- › Heavy-duty aluminum body; extremely durable design for both school and professional applications; die-cast body resists corrosion, preventing clay body contamination
- › Unique flexible design; order what is needed now, upgrade later
- › Special triple safety system; ignition key prevents unauthorized use; limit switch (optional) stops auger when exposed; prominent emergency stop button
- › Stainless steel auger; non-corrosive surface easily moves clay through barrel
- › Easy disassembly bolt system for easy removal of barrel top, allowing for thorough cleaning of interior
- › Optional vacuum attachment on models PM-071V & PM-071V-LS; Powerful 1/3 HP pump is compact and easy to attach; operates at the flip of a switch with minimal depreciation of 800 lbs per hour extruding capacity
- › Retractable clay rest
- › 1 year warranty



Vacuum Pump Option



Control Switch Operation Panel



Choosing your Slab Roller 機

NIDEC-SHIMPO has two Slab Roller models that can suit all of your needs.

Models: SR-3050 | SRM-1624



Here are some main slab roller features that can help you in your decision making.

SR-3050 SLAB ROLLER

- *Produces slab thickness up to 3"*
- *Wagon wheel or crank handle create effortless feeding in either direction*
- *Stationary design for studios or classrooms*
- *Large 30" x 50" table for plenty of workspace*



SR-3050

SRM-1624 MINI SLAB ROLLER

- *Thickness indicator, provides synchronized fine adjustment*
- *Locking two-roller lever system*
- *Compact design and easily portable*
- *16" X 24" table*



SRM-1624



SR-3050

The **SR-3050** can produce up to a 3" thick slab. Its **TWO-ROLLER** system evenly distributes pressure on the slab to reduce warping. The dual hand-wheels and thickness indicator provide synchronized fine adjustment and allow for precise control of the slab thickness. The **SR-3050** includes a wagon wheel handle that provides effortless feeding of slab through rollers in either direction. It features a large 30" x 50" table for plenty of workspace and comes with one canvas set to complete the package.

Features

- › Two-roller system evenly distributes pressure on slab to reduce warping
- › Dual hand-wheels provide synchronized fine adjustment that allow for precise control of slab thickness with the turn of one handle
- › Thickness indicator allow for precise control of slab thickness
- › Handle type: Wagon wheel or crank handle creates effortless feeding in either direction
- › Frame material constructed of heavy gauge steel



Dimensions	39 1/4" x 50 1/8" x 49" (W x L x H)
Table Dimensions	30" x 50"
Table Height	36"
Shipping Weight	167 lbs
Warranty	1 year



SRM-1624

The Mini Slab Roller **SRM-1624** features a *TWO-ROLLER* system with easy locking roller levers and thickness indicator that provides synchronized fine adjustments. The **SRM-1624** can produce a slab with the thickness of 0-1". Its lightweight (31 lbs), compact design makes it *PORTABLE* and quick to disassemble for storage; and yet its 16" X 24" table makes it a permanent addition to any studio or classroom.

Features

- › Locking roller levers provide synchronized fine adjustments that allow for precise control of slab thickness
- › Thickness indicator provides synchronized fine adjustments that can produce a thickness of 0-1"
- › Compact and lightweight design makes it easily portable

Table Dimensions	16" X 24"
Weight	31 lbs
Warranty	2 year



Lightweight, Compact and Portable



Two Roller System



Canvas and Hand Lever



BALL-MILL

BALL MILL RACK ATTACHMENT

The **BALL MILL RACK ATTACHMENT** attaches to most **NIDEC-SHIMPO** wheels when used with a 12" wheel-head. This *SPACE-**SAVING*** rack will allow for variable speed milling. The rack accommodates jars from 3" - 1/2" to 9" diameter up to 10" long. Made of *HEAVY-DUTY* cast iron, the unique folding feature lets you use your **NIDEC-SHIMPO** wheel for throwing without detaching the rack.

Features

- › Heavy-duty milling; precise milling with variable speed
- › Compact design; space-saving/folding design lets you use your wheel for throwing without detaching the rack
- › Model construction; heavy-duty cast iron
- › Heavy-duty cast iron construction
- › Wheel Attachment fits on most **NIDEC-SHIMPO** wheels with a 12" wheel-head

JIGGER ARM ATTACHMENT

The **JIGGER ARM ATTACHMENT** is made of *HEAVY-DUTY* cast iron, this *ADJUSTABLE* arm assists you in producing jiggered pieces up to 7" - 1/2" high and 11" in diameter and attaches to most **NIDEC-SHIMPO** wheels.

Features

- › Adjustable arm assists you in producing jiggered pieces up to 7-1/2" high and 11" in diameter
- › Heavy-duty cast iron construction
- › Wheel Attachment fits on most **NIDEC-SHIMPO** wheels with a 12" wheel-head



JIG-ARM



— BM-PTA-01



BM-PTA-02

Ball Mill Porcelain
Jars and Balls

PTA-01 BALL MILL, PTA-02 BALL MILL

Ball mills have been used for decades to mill materials used in the ceramics industry. NIDEC-SHIMPO's *HEAVY-DUTY* ball milling machines enable very precise milling in porcelain jars, even for relatively tough materials, wet or dry. **NIDEC-SHIMPO BALL MILLS** have a compact design that are constructed using powder-coated steel for long lasting durability. The **PTA-01** accommodates one jar and the **PTA-02** can handle two jars. Easy adjustments can be made to the sturdy roller bars to accommodate jars from 1-liter to 10-liters. Each milling machine comes standard with a breaker switch.

Motor	PTA-01 - 115V (60Hz) 180W, PTA-02 - 115V (60Hz) 180W
Dimensions	PTA-01 - 21" x 17" x 14", PTA-02 - 38" x 17" x 14"
Ship Weight	PTA-01 - 110 lbs, PTA-02 - 120 lbs

BALL MILL PORCELAIN JARS

Ball mill porcelain jars fit on the **PTA-01, PTA-02, BALL MILL RACK ATTACHMENT**.

1-Liter Jar Dimensions	Includes about 40 balls ranging from ½" - 1" in diameter (Mixed) 5 ¾" D x 8 ⅞" H
2-Liter Jar Dimensions	Includes about 60 balls ranging from ¾" - 1 ¼" in diameter (Mixed) 7" D x 9 ½" H
3-Liter Jar Dimensions	Includes about 40 balls ranging from 1" - 1 ¼" in diameter (Mixed) 8" D x 11" H
5-Liter Jar Dimensions	Includes about 60 balls ranging from 1" - 1 ¼" in diameter (Mixed) 9 ½" D x 12 ½" H
10-Liter Jar Dimensions	Includes 120 balls ranging from 1" - 1 ¼" in diameter (Mixed) 12" D x 14" H

A hand is shown in the upper left corner, holding a white marker and applying a band to a dark, cylindrical wheel. The wheel is part of a larger assembly, with other wheels visible in the background. The entire image has a blue tint.

Choosing your Banding Wheel

NIDEC-SHIMPO has five banding wheels that
can suit all of your needs.

**Models: BW-30MC | BW-25HC | BW-25LC
BW-22LC | BW-18LC**

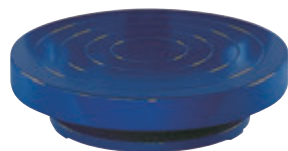


BW-30MC

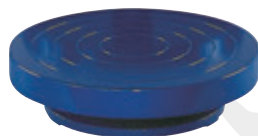
BW-25HC



BW-22LC



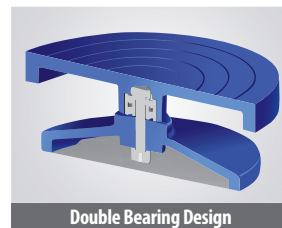
BW-25LC



BW-18LC

BANDING WHEELS

NIDEC-SHIMPO's BANDING WHEELS are used for decorating, sculpting, carving and hand building. The **DOUBLE BEARING** design is like no other banding wheel; designed to provide reliably smooth and even rotation for the most delicate applications. It's no wonder they are the banding wheel of choice for studio artists, production potters and classrooms alike. We offer a selection of five different models with various wheel-head diameters and heights.



BW-30MC Dimensions	11 3/4" D x 4 3/4" H
Weight	27 lbs

BW-25HC Dimensions	9 7/8" D x 7 1/2" H
Weight	17 lbs

BW-25LC Dimensions	9 7/8" D x 2 1/4" H
Weight	14 lbs

BW-22LC Dimensions	8 3/4" D x 2 1/4" H
Weight	11 lbs

BW-18LC Dimensions	7" D x 2 1/4" H
Weight	6.5 lbs



HAND-HELD EXTRUDER

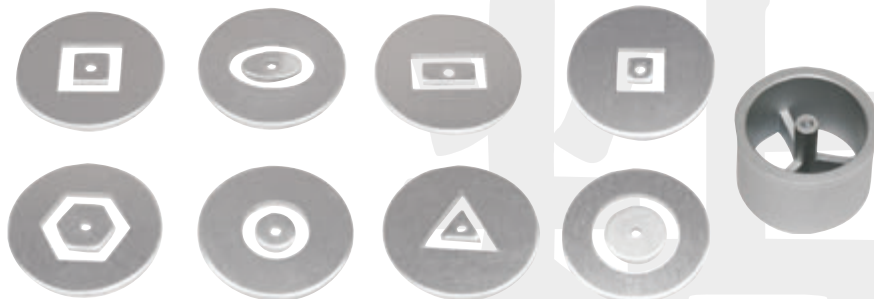
NIDEC-SHIMPO's HAND-HELD EXTRUDER comes with *FIVE PRE-CUT DIES* and one solid die to cut your own extruder shape.

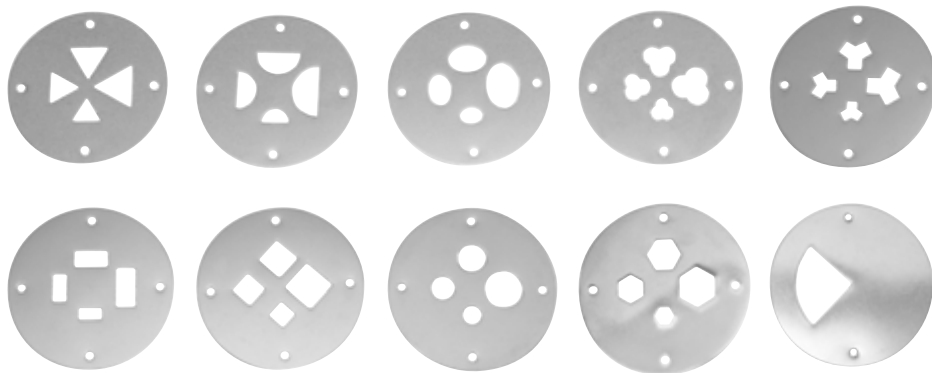
Part# H-EXTRD

HOLLOW DIE EXTRUDER SET

The HOLLOW DIE EXTRUDER SET comes with *EIGHT DIES* as shown and the barrel insert to hold the dies in place. Just place the barrel and the hollow die in our hand-held extruder and extrude hollow forms!

Part# H-EXTRD-HDS

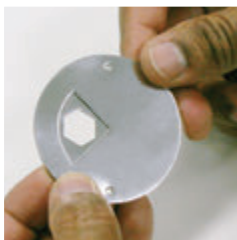




4 IN 1 EXTRUDER DIE SET

The 4 IN 1 EXTRUDER DIE SET comes with 9 dies and 1 block out die. Use the block out die to cover three of the four size options on each 4 IN 1 die. Simply place the desired 4 IN 1 die with the block out die over it. Insert the two dies into our hand-held extruder and begin extruding.

Part# H-EXTRD-4IN1





Choosing your Pottery Tools

道具

NIDEC-SHIMPO tools are simplistic and practical; they are essential to a Japanese potter when working on the wheel because of their effectiveness and ease of use.

NIDEC-SHIMPO tools can be purchased individually or as a set.



— Short OX TONGUE



THROWING HOOK TOOL - KIGOTE (Hari gata)

THROWING HOOKS are used to round out forms while throwing. They can also help to add the final touch of roundness in hard to reach areas of partially closed forms.

OX TONGUE TOOL - GYUBERA

OX TONGUE TOOLS are designed in both long and short styles to suit potter's needs. They can be used for forming the inside of a vessel, outside of a cylinder and even compressing a platter.

COMBING TOOL - KIGUSHI

NIDEC-SHIMPO COMBING TOOLS create fabulous consistent texture and can be used for scoring.

THROWING DISC TOOL - KIGOTE (Maru gata)

NIDEC-SHIMPO THROWING DISCS are round with a subtle point. These discs will help to compress the bottom or inside of any vessel.

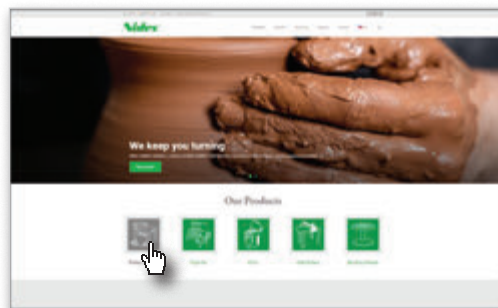


Long OX TONGUE TOOL

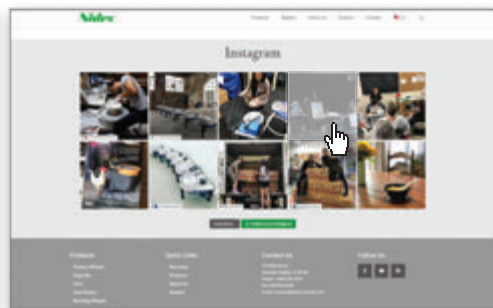


Large THROWING HOOK TOOL

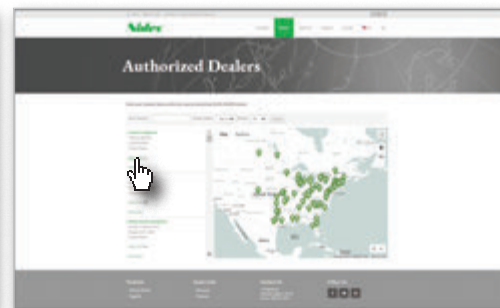
NIDEC-SHIPPO's user-friendly website has a wealth of information at your fingertips. Visit www.shimporceramics.com



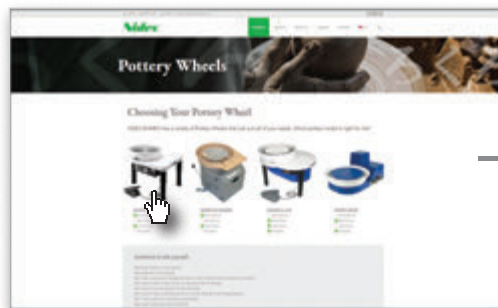
Stay current with special promotions and new products right on our home page.



Follow us on social media right on our website to stay current with demos, lesson plans, photo gallery, and much more.



Find out where to purchase NIDEC-SHIPPO equipment on our dealer location list.



Find the information you need on all of our products, evaluate and compare each of our models to make the right choice.



Learn more about our current products, including specifications, manuals, accessories, and even product video all at one location.



Did you lose your manual or need support? Visit our support section for all the information you need (dating back to our first generation of equipment).



"Porcelain made easy with my SHIMPO WHISPER, quiet and strong."

- Tom Coleman



"Many generations of SHIMPO WHEELS, many generations of potters."

- Centre de Ceramique de Ste-Foy

Testimonials

"I have a SHIMPO wheel from the 1970's, still works well, durability is important for potters."

- David Stuempfle



"My SHIMPO WHISPER makes it easy to demonstrate during my workshops and I can still easily hear and answer questions from the audience. It's the only wheel I use."

- Tom Turner



"I love this PUGMILL. The engineering is brilliant, the machine is very substantial, and the porcelain touches only stainless steel. The pugged clay is as good as I have ever used."

- John Tilton



NIDEC-SHIMPO

"The tabletop design of the SHIMPO ASPIRE is great for my budget, for my small studio and for my aspiring artists!"

- Danielle McDaniel
(The Clay Lady)





175 Wall Street, Glendale Heights, IL 60139 USA

Phone: (800) 237-7079 • Fax: (630) 924-0340

www.shimpoceramics.com

© NIDEC-SHIMPO CORPORATION. 2019 Catalog