



SHIMPO RK-3E

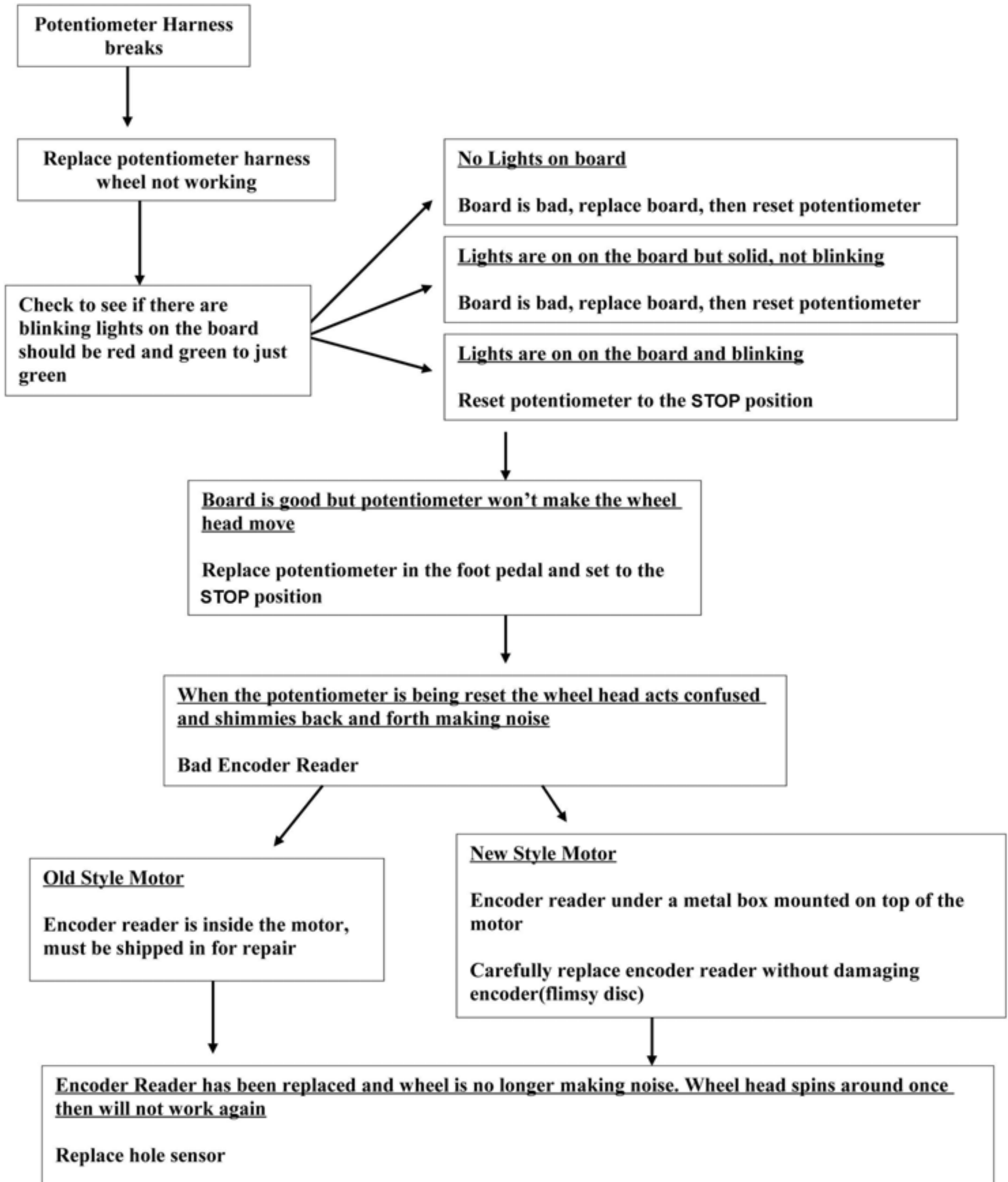
Potter's Wheel Troubleshooting Manual



NIDEC-SHIMPO CORPORATION

SHIMPO VL-WHISPER Repair Flow Chart

Created 12/10

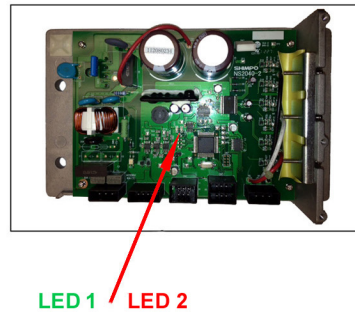


Troubleshooting your Whisper wheel

Before starting, look over your wheel. Are there any broken or damaged parts? If so, please contact Nidec-Shimpo for replacement parts.

If the wheel head does not spin after the power has been turned on

- 1) Remove the blue undercover by unscrewing all the screws, and sliding the undercover off.



- 2) Turn the wheel off then on again while watching the control board.
 - If you do not see ANY lights on the board, your board is bad, and needs replacing. Please contact Nidec-Shimpo to order a replacement board, and follow the, "How to Replace the Whisper Controller" instruction guide.
 - If you see both a **GREEN** blinking light, and a **RED** blinking light, this is normal. After a minute or so, the **RED** blinking light should turn off, and ONLY the **GREEN** light is left blinking. In this case, follow the, "Resetting the Potentiometer" instruction guide.
***Note:** If the wheel head does not spin after resetting the potentiometer, then you may need to replace the potentiometer. Please contact Nidec-Shimpo to order a replacement potentiometer, and follow the, "How to Replace the Potentiometer" instruction guide.
 - If the **RED** blinking light does not turn off, you may have a bad board, or a bad HOL sensor, or a bad encoder reader. Contact Nide-Shimpo for more assistance on which part may need replacing.
 - If you see both a solid **GREEN**, and a solid **RED** light, then the board is bad, and needs to be replaced. Please contact Nidec-Shimpo to order a replacement board, and follow the, "How to Replace the Whisper Controller" instruction guide.

How To Prevent The Foot Pedal Cord From Being Pulled Out



ATTACH A ZIP TIE TO THE OUTSIDE OF THE BLUE PANEL SECUREING THE FOOT PEDAL CORD

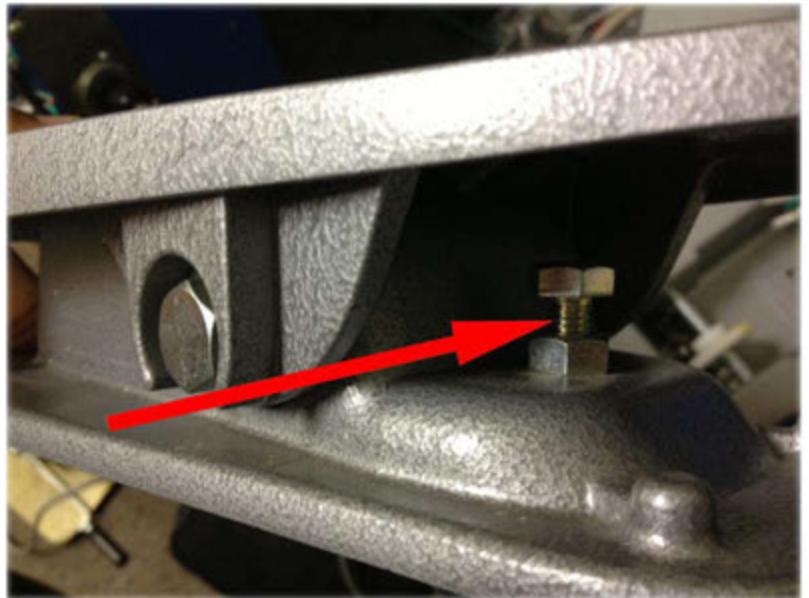


WRAP THE PEDAL CORD SEVERAL TIMES AROUND ONE OF THE FRONT LEGS AND SECURE WITH A ZIP TIE.

How To Adjust The Foot Pedal's Range of Motion

1. To increase the range of motion in the foot pedal, lower the set bolt. THEN reset your potentiometer to the new "stop" position.

2. To decrease the range of motion in the foot pedal, raise the set bolt. THEN reset your potentiometer to the new "stop" position.



How To Adjust The VL-WHISPER's Foot Pedal Tension



Tool Required:
M-13 Wrench



New Type Pedal
Part# ARKA3600121
[Permanent]
Part# ARKA3500120
[Detachable]



Old Type Pedal
Discontinued

New Type Pedal



1. Use an M-13 wrench on the right side of the foot pedal.



2. Adjust the U-nut to change the tension of the foot pedal.



Caution

Do not try to unscrew the bolt on the left side (M17 bolt)

Old Type Pedal



1. On the right side of the foot pedal, loosen the outer bolt first, then loosen the inner bolt.



2. Loosen the inner bolt until the proper tension is achieved. Lightly tighten the outer bolt to meet up with the inner bolt.



Caution

Do not try to unscrew the bolt on the left side (M17 bolt)

Resetting the Potentiometer



REQUIRED TOOLS

1. Allen Wrench - 5/32"
2. Phillips screw driver

Adjusting Potentiometer:



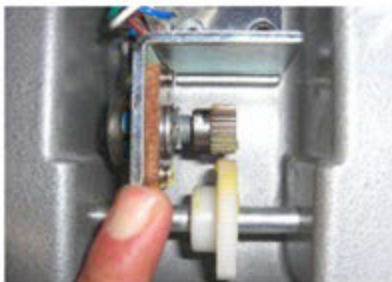
1. Unscrew the 4 feet using a Philips screwdriver



2. Remove the plastic cover and make sure the foot pedal is in the STOP position. Turn the power on the wheel.



3. Loosen the two screws connecting the potentiometer bracket to the foot pedal housing.



4. Move the potentiometer (silver gear) away from the white plastic gear so they are not touching.



5. Turn the silver gear until the wheel head starts to turn. Next turn the gear in the opposite direction until the wheel head stops.



6. When the wheel head stops, slide the potentiometer up against the white gear, then tighten the screws that mount the bracket to the foot pedal housing. Replace the plastic cover and the 4 screws. Your wheel should now run from 0/STOP to 250 rpm.

How To Replace The Whisper Controller



REQUIRED TOOLS

- 1.wire cutter (to cut zip tie)
2. zip tie
- 3.Phillips screw driver
- 4.Allen Wrench



Part #: ARKA3400130
Whisper Controller

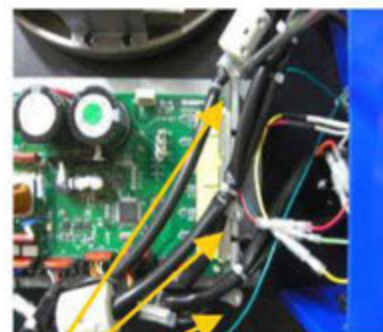
**Make sure your wheel is
Unplugged before you
start any repairs!**



1.Remove the undercover by removing all undercover screws then sliding the undercover off.



2.Cut the zip tie to release cables that are zip tied together.



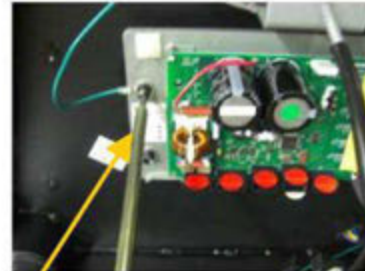
3.Unscrew the 3 cable holder.



4.Unscrew the green ground wire.



5.Un-clip all 5 cables from the control board by squeezing the sides of the clip and pulling



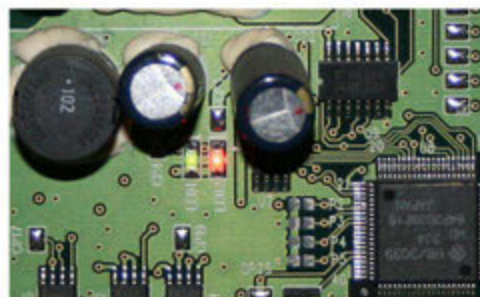
6. Unscrew all the mounting bolts, including the green ground wire to take off the controller



7. Install the new controller by mounting back onto the wheel. Remember to clip on all the wire harnesses and re-attach the ground wire.



8. Plug the wheel back in and turn the power ON.



9. The controller should flash both lights at start up.

LED1 = **Green** LED2 = **Red**



10. Very shortly after, the LED2 **Red** will turn off and only LED1 **Green** will be flashing.

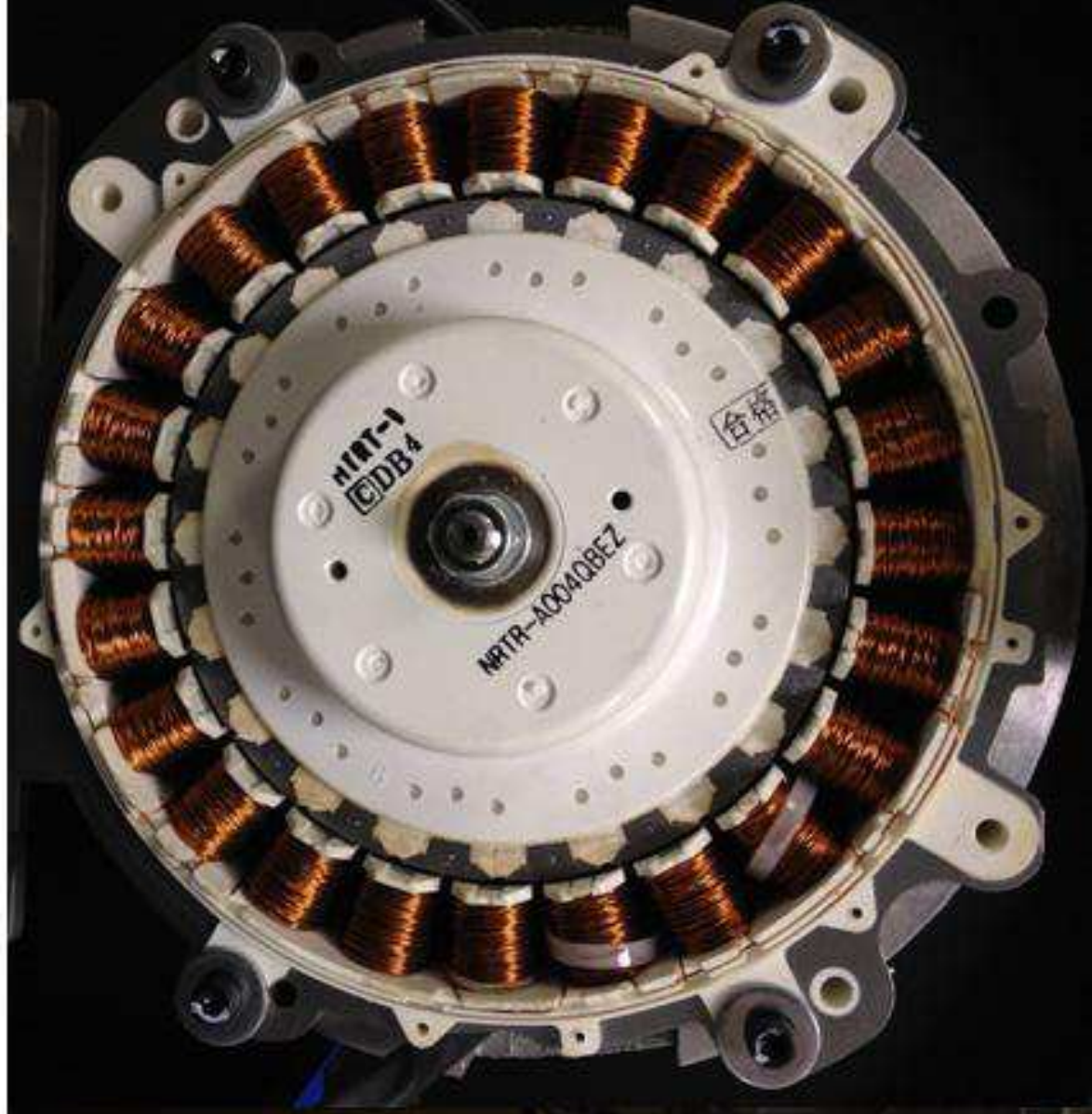
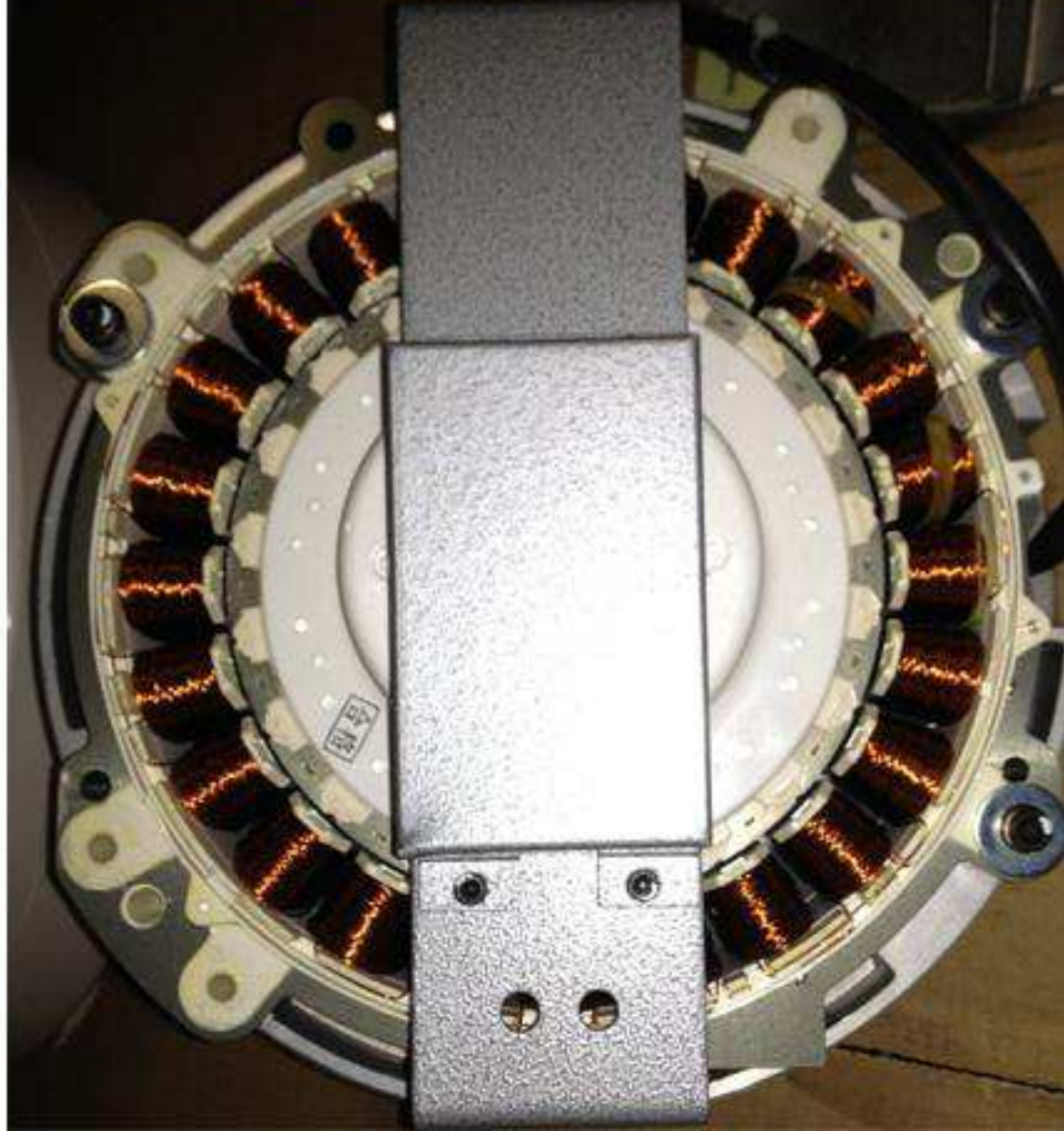


11. Make sure that all the parts are back in place, all wire harnesses are securely clipped in, the ground wire is fastened and the new controller is firmly screwed on. Finally, replace the blue undercover.

MOTOR FOR VL & RK WHISPER

NEW STYLE MOTOR

OLD STYLE MOTOR



NIDEC-SHIMPO CORPORATION

175 Wall Street

Glendale Heights, IL 60139

Phone: 1-800-237-7079 Fax: 630-924-0340